



# Caledonian

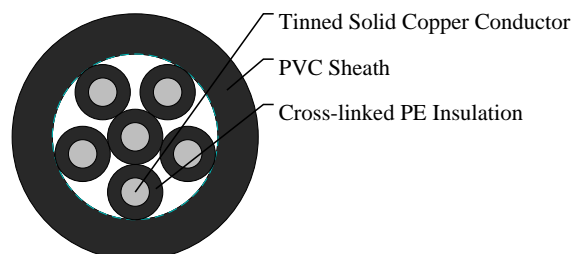
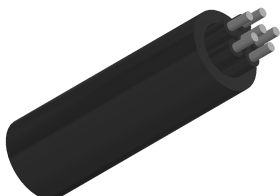
## Railway Cables

[www.caledonian-cables.com](http://www.caledonian-cables.com)

[marketing@caledonian-cables.com](mailto:marketing@caledonian-cables.com)

### SCG Local Control Cables

RS/SCG-075-2XY-6C6S



### APPLICATIONS

The cables are designed as local control or power supply cables for trackside and between the rails equipments inside the equipment shelter.

### STANDARDS

SNCF CT 466

### VOLTAGE RATING

450/750V

### CABLE CONSTRUCTION

Conductors: Class 1 tinned solid copper.

Insulation: Cross-linked black polyethylene (XLPE) insulation.

Sheath: PVC sheath, coloured black.

### PHYSICAL AND THERMAL PROPERTIES

Minimum Bending Radius: 5xOD (static); 10xOD (dynamic)

Operating Temperature: -20°C to +90°C

### DIMENSION AND PARAMETERS

No. of Cores	Conductor Size	Conductor Diameter	Nominal Diameter over Insulation	Nominal Sheath Thickness	Nom. Overall Diameter	Approx. Weight	max. conductor resistance
	mm <sup>2</sup>	mm	mm	mm	mm	kg/km	Ω/km
6	6	2.76	5.4	3.9	23.5	780	3.11



# Caledonian

## Railway Cables

[www.caledonian-cables.com](http://www.caledonian-cables.com)

[marketing@caledonian-cables.com](mailto:marketing@caledonian-cables.com)



Fire Retardant  
NF C32-070-2.2(IC1)  
IEC60332-3-2.4/EN50266-2.4



Laid In Cable Tray



Rated voltage